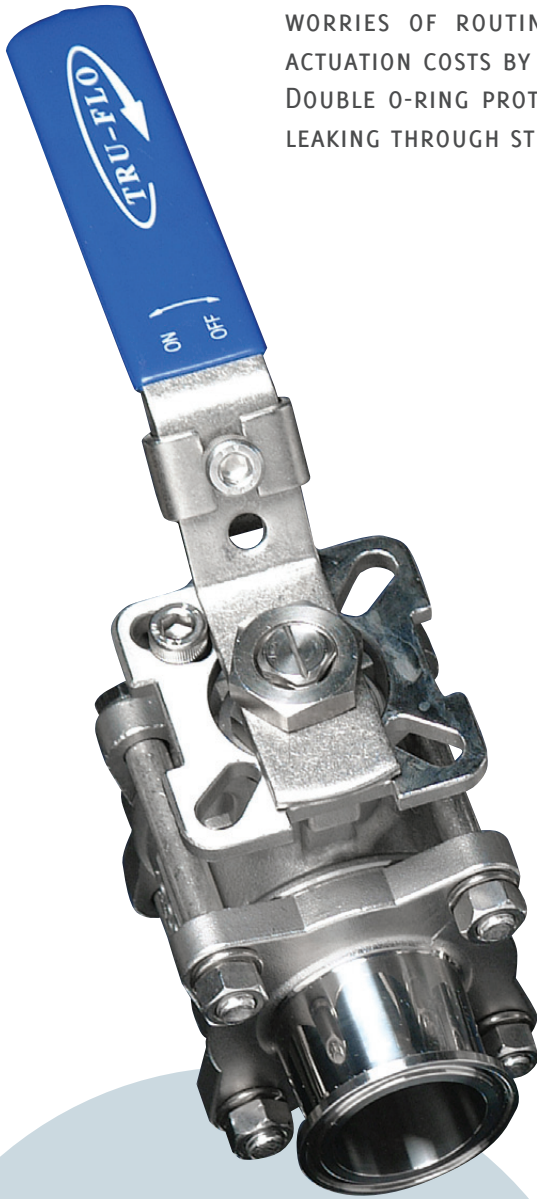


SANITARY DIRECT MOUNT BALL VALVES

THE NEXT GENERATION BALL VALVES ARE LIVE LOADED WITH SELF-ADJUSTING PACKING AND A DESIGN THAT IS SPECIFICALLY MANUFACTURED FOR HIGH CYCLE APPLICATIONS. **TRU-FLO** PRODUCTS REDUCE THE WORRIES OF ROUTINE MAINTENANCE EXPENSES WHILE LOWERING ACTUATION COSTS BY ELIMINATING CUSTOM BRACKETS AND COUPLERS. DOUBLE O-RING PROTECTION PROVIDES ADDITIONAL DEFENSE AGAINST LEAKING THROUGH STEM AND LOWER OPERATING TORQUE.

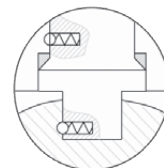


Features & Benefits

- » Designed for high cycle automated applications
- » Highly polished internals and end caps with 8-12 Ra finish
- » All materials comply with FDA, USDA, & 3A requirements
- » Investment cast body and end caps
- » ASTM 316 stainless steel
- » Standard with Tri-clamp® ends; *other end configurations available*
- » 100% tested and inspected prior to shipping
- » Full traceability of all components
- » SST x PTFE steam seats available for high temperature applications
- » Standard seats are TFM-1600
- » Cavity fillers are virgin PTFE



AVAILABLE IN STANDARD
OR CAVITY FILLED SEATS

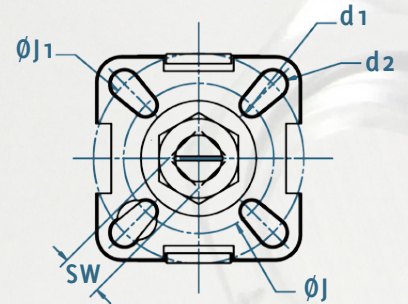
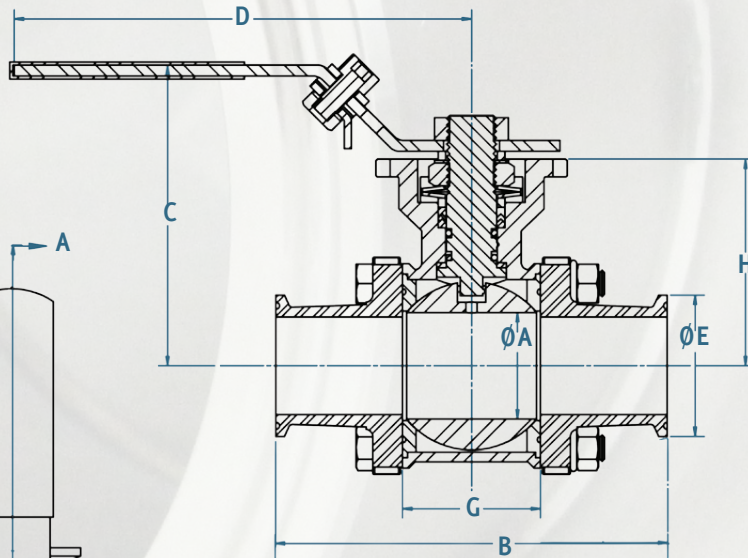
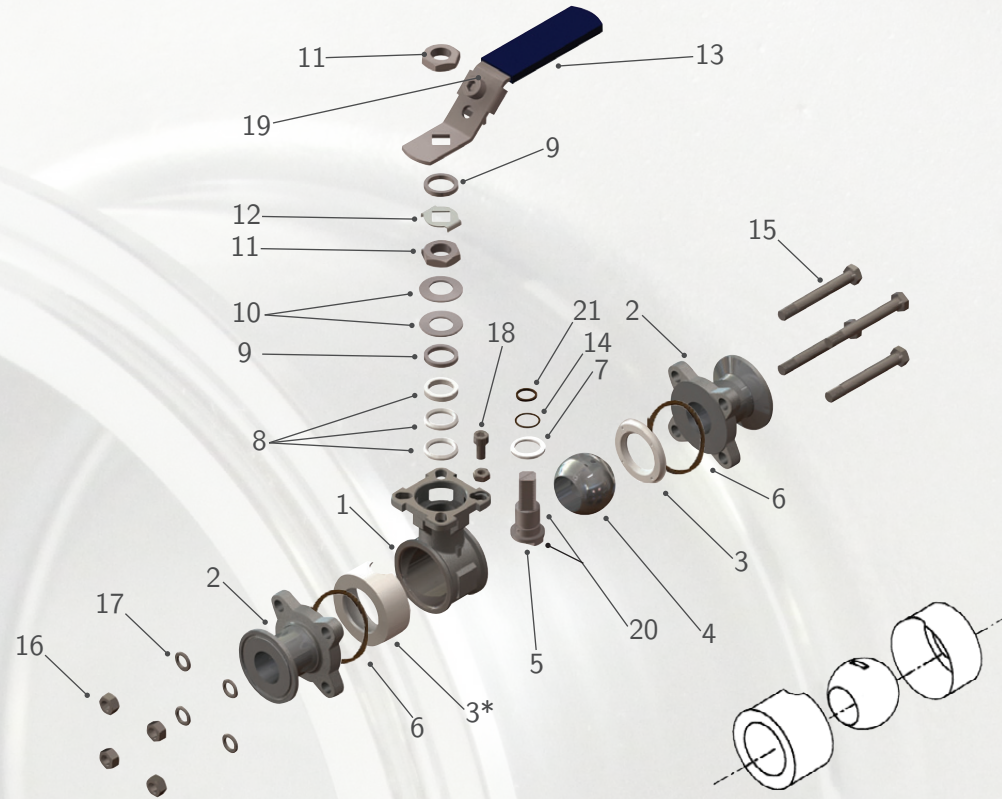


Pyramidal Stem &
Anti-Static Device
(Optional)



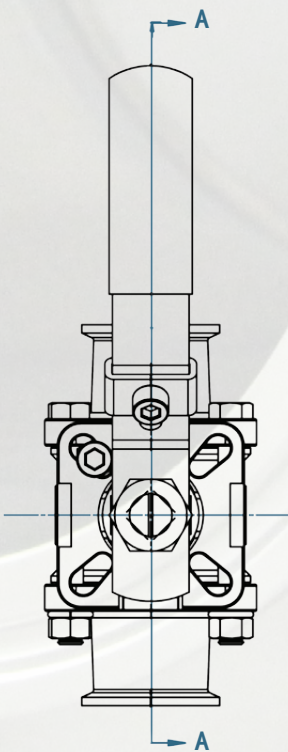
EA-33NF-SN

Item	Part (Qty)	Material
1	Body	CF8M/316
2	End Caps (2)	CF8M/316
3*	Seats (2)	PTFE
4	Ball	SUS 316
5	Stem	SUS 316
6	Body Seal (2)	PTFE
7	Stem Gasket	PTFE
8	Stem Seals (3)	PTFE
9	Gland Ring (2)	SUS 301
10	Belleville Spring Washer (2)	SUS 304
11	Lever Nut	SUS 304
12	Locking Tab	SUS 304
13	Handle	SUS 304
14	O ring	SUS 304
15	Bolts (4)	SUS 304
16	Bolts Nut (4)	SUS 304
17	Washer (4)	SUS 304
18	Stop Screw	PVC
19	Locking Device	SUS 304
20	Static Device (2)	SUS 316
21	O ring	VITON®



*Option: Cavity Filled

Standard Grit	Ra		RMS		Class
	µin	µ	µin	µ	
240g	14-18	.34-.46	15-20	.38-.51	B
320g	8-10	.21-.25	9-11	.23-.28	A



Size	A	B	C	D	E	G	H	L	J	J1	d1	d2	SW	ISO5211
½"	0.37	3.50	2.79	4.33	1.00	0.99	1.67	0.32	1.42	1.65	0.24	0.24	0.35	F03/F04
¾"	0.63	4.00	2.89	4.33	1.00	1.09	1.76	0.32	1.42	1.65	0.24	0.24	0.35	F03/F04
1"	0.87	4.50	3.31	5.32	1.98	1.30	2.13	0.39	1.65	1.97	0.24	0.28	0.43	F04/F05
1½"	1.37	5.50	4.31	6.50	1.98	1.94	2.89	0.58	1.97	2.76	0.28	0.35	0.55	F05/F07
2"	1.87	6.25	4.68	6.50	2.52	2.50	3.26	0.58	1.97	2.76	0.28	0.35	0.55	F05/F07
2½"	2.37	7.00	5.25	9.06	3.05	2.76	4.21	0.67	2.76	4.02	0.35	0.43	0.67	F07/F10
3"	2.88	9.00	6.30	11.81	3.58	4.02	4.62	0.67	2.76	4.02	0.35	0.43	0.67	F07/F10
4"	3.84	9.50	6.90	11.81	8.90	4.02	5.21	0.67	2.76	4.02	0.35	0.43	0.67	F07/F10
6"	5.78	15.50	8.51	19.68	6.57	7.42	8.50	1.06	4.02	4.92	0.47	0.55	1.06	F10/F12