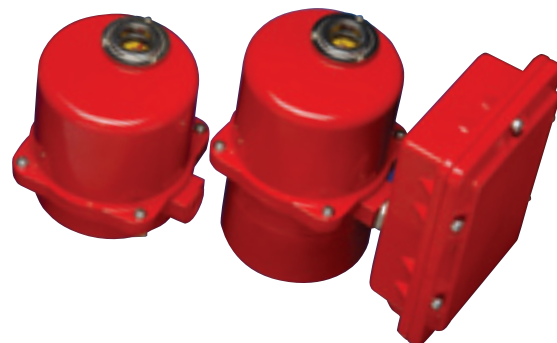


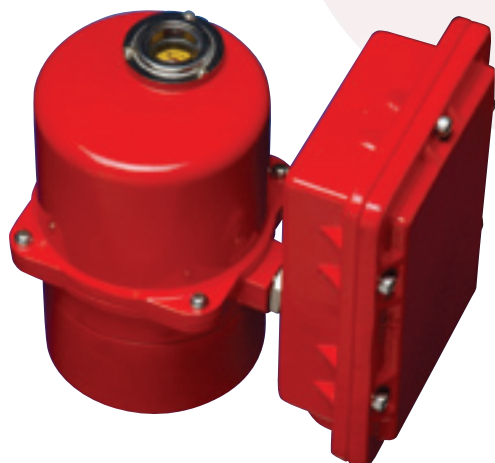
ELECTRIC ACTUATORS ETI 300-1950 SERIES

TRU-FLO'S LINE OF ELECTRIC ACTUATORS OFFERS A BROAD RANGE OF TORQUES FROM 300 TO 30,000 IN-LBS AND NUMEROUS FEATURES INCLUDING MANUAL OVERRIDES, AUXILIARY SWITCHES, 4-20mA MODULATING CONTROL, SEVERAL VOLTAGE OPTIONS; 1-PHASE 24/120V/220V AND 12 OR 24VDC, 3-PHASE 220V, 380V, AND 400V. THE UNITS FEATURE EPI-CYCLICAL GEAR TRAINS AND A UNIQUE MANUAL OVERRIDE WITH HAND WHEEL.



Features & Specifications

- » Die cast aluminum enclosure
- » Corrosion resistant NEMA 4/4x construction
- » Utilizing ISO 5211 mounting patterns
- » Optional servo card for modulating service; 4-20mA, 1-5mA, 1-5VDC, 0-10VDC, command signal potentiometer inputs with optional 4-20mA transmitter
- » CSA and CE approved
- » Self-locking gear train-no brake required
- » Visual position indication
- » Working temperature of -14°F-160°F
- » Stainless steel fasteners
- » Manual override with hand wheel standard on most models
- » Standard two auxiliary limit switch



Nº AN985455101



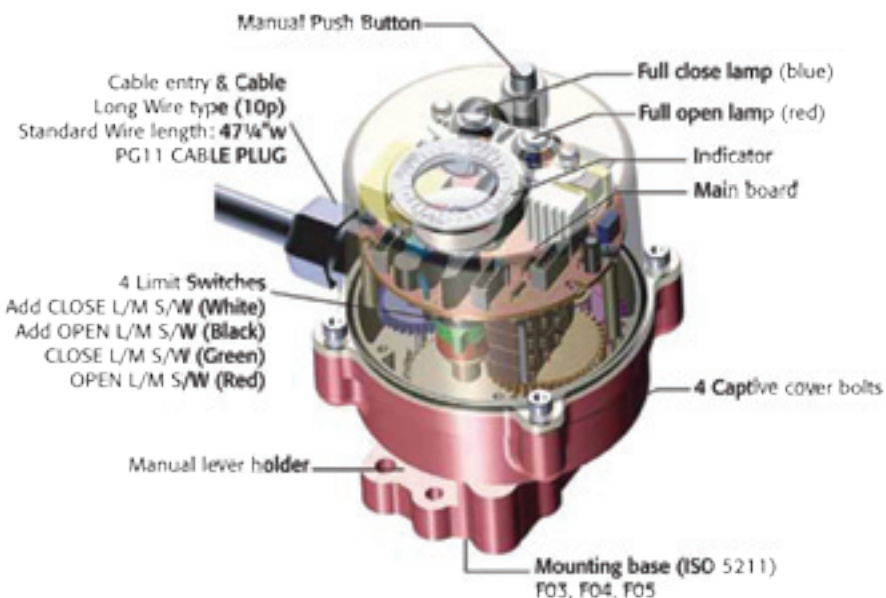
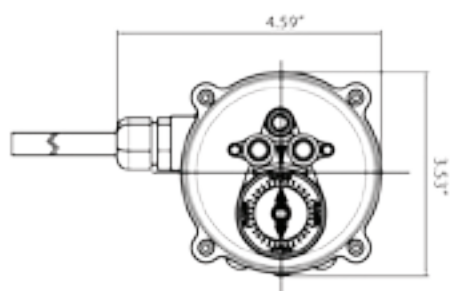
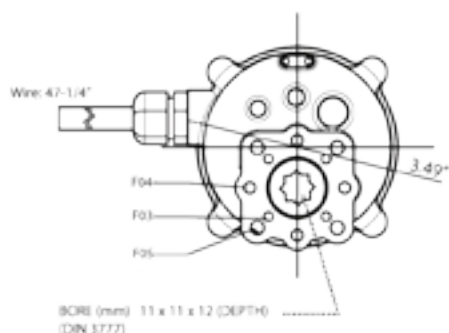
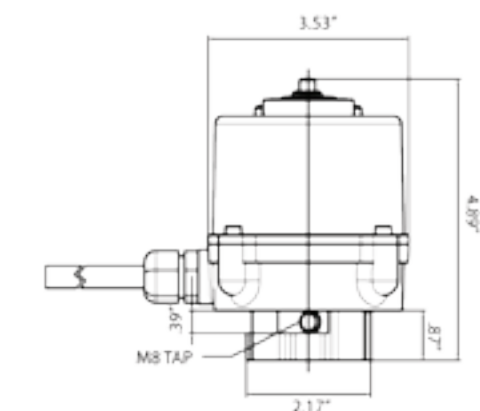
Nº 211860

WE-350 & WE-500 SERIES

THE WE-350 SERIES ELECTRIC ACTUATOR IS SPECIFICALLY DESIGNED TO OPERATE SMALL SIZE BALL VALVES (1" AND LESS), DAMPERS, AND OTHER QUARTER-TURN DEVICES.

Features & Specifications

- » Compact and lightweight
- » High resistance to corrosion due to hard anodizing on inside and outside with polyester powder coating on external surface
- » Multi-voltage (AC85-265V/1PH, 24VDC)
- » Standard space heater
- » Weather proof (IP67)
- » Push button and manual lever
- » Wide, easy mounting base standard to ISO5211 (F03/F04/F05)
- » Standard four limit switches
- » Captive cover bolts
- » Mechanical position indicator & LED lamp indicators (Open/Close)



Type (Model)	Maximum Output Torque	Operating Time 60/50Hz	Mounting Size	Electric Motor Stop	Supplying Power & Rating Current (A) 60/50Hz, 1 Phase			Duty Cycle IEC34-1	Manual Level Angle	Weight
	in-lbs	90°			110VAC	220VAC	24VDC			Lbs
WE-350	354	12 sec	F03, F04, F05	2A	0.120	0.060	0.460	50%	90°	2.65
WE-350HS	270	6.5 sec			0.065	0.033	0.250			