

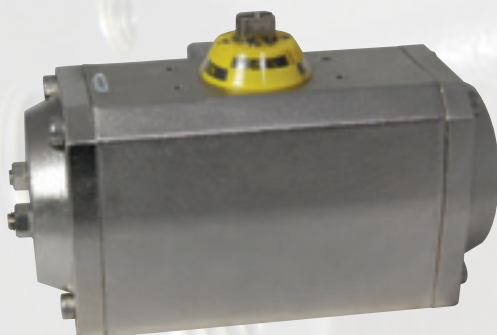
STAINLESS STEEL ACTUATORS SS SERIES

Features & Specifications



- » Compact design utilizes the same body for double acting and spring return units.
- » NAMUR VDI/VDE 3845 and ISO 5211 mounting dimensions
- » Female pinion drive standard, with optional drives to meet specific application requirements
- » Ideal for high cycle applications with honed bore
- » Rugged tooth design allowing for manual override
- » High visibility position indication
- » High cycle life wear pads serves as both guide and wear bearings
- » Epoxy coated spring cartridges are pre-loaded for safety
- » Alternative operating media includes air, water, nitrogen and compatible hydraulic fluids
- » Stainless steel fasteners
- » Full traceability of all component parts
- » Factory pressure and leak tested and boxed individually
- » Wide range of adapters and accessories available

TRU-FLO'S NEW STAINLESS STEEL ACTUATORS ARE BY DESIGN, BEST IN CLASS. THE SS SERIES ACTUATORS TAKE CORROSION RESISTANCE TO THE EXTREME WITH ALL OF THE GREAT ENGINEERING FEATURES THAT SEPARATE TRU-FLO FROM THE COMPETITION. OUR STAINLESS STEEL ACTUATORS CONFORM TO THE ISO STANDARD WHICH MAKES VALVE AUTOMATION EASY AND COST EFFECTIVE. TRU-FLO'S DUAL PATENTED TRAVEL STOPS ALLOW UP TO 110° OF STROKE IN A 90° ACTUATOR, FAR SUPERIOR IN POSITIONING ADJUSTMENT.



Model	40 PSIG	60 PSIG	80 PSIG	100 PSIG	120 PSIG
SS12*	62	94	125	156	187
SS16	137	206	275	344	412
SS21	250	375	500	625	750
SS26	375	562	750	937	1125
SS31	500	750	1000	1250	1500
SS36	800	1200	1600	2000	2400
SS46	1562	2344	3125	3906	4687
SS56	3000	4500	6000	7500	9000
SS66	6000	9000	12000	15000	18000

*SS12 comes standard without dual travel stops

Torque values (in-lbs)