

ALPHA STAINLESS STEEL ACTUATORS



Features & Specifications

- » Stringent tests ensure a high quality product
- » Excellence in corrosion resistance with all cast or machined parts of stainless steel or monel
- » ISO NAMUR mounting
- » Factory lubricated for optimum actuator life
- » Precision cast stainless steel pistons
- » Replaceable PTFE pinion bearings to ensure low friction, stability above 400°F, and chemical resistance
- » Travel stop provide +/-4° adjustment
- » Simple maintenance using standard shop tools
- » Pre-loaded cartridges convert from double acting to spring return
- » Investment cast stainless steel bodies are rugged and built to last
- » Unique drive pinion ensures blowout proof design for safety
- » Heavy duty mounting kits to ensure maximum actuator and valve cycle life
- » Pressure rating of 150 PSIG maximum

THE ALPHA SS SERIES STAINLESS STEEL ACTUATORS WERE DESIGNED TO PRODUCE A SUPERIOR, AFFORDABLE ACTUATOR. THE RACK AND PINION DESIGN WAS CHOSEN DUE TO ITS COMPACT SIZE RELATIVE TO TORQUE OUTPUT AND BECAUSE IT NEEDS LESS CAST PARTS, MAKING THIS SUPERIOR CORROSION RESISTANT PRODUCT MORE AFFORDABLE FOR THE END-USER.

Temperature Rating

High Temp	VITON®	0°F to 400°F
Low Temp	Silicon-based	-55°F to 175°F

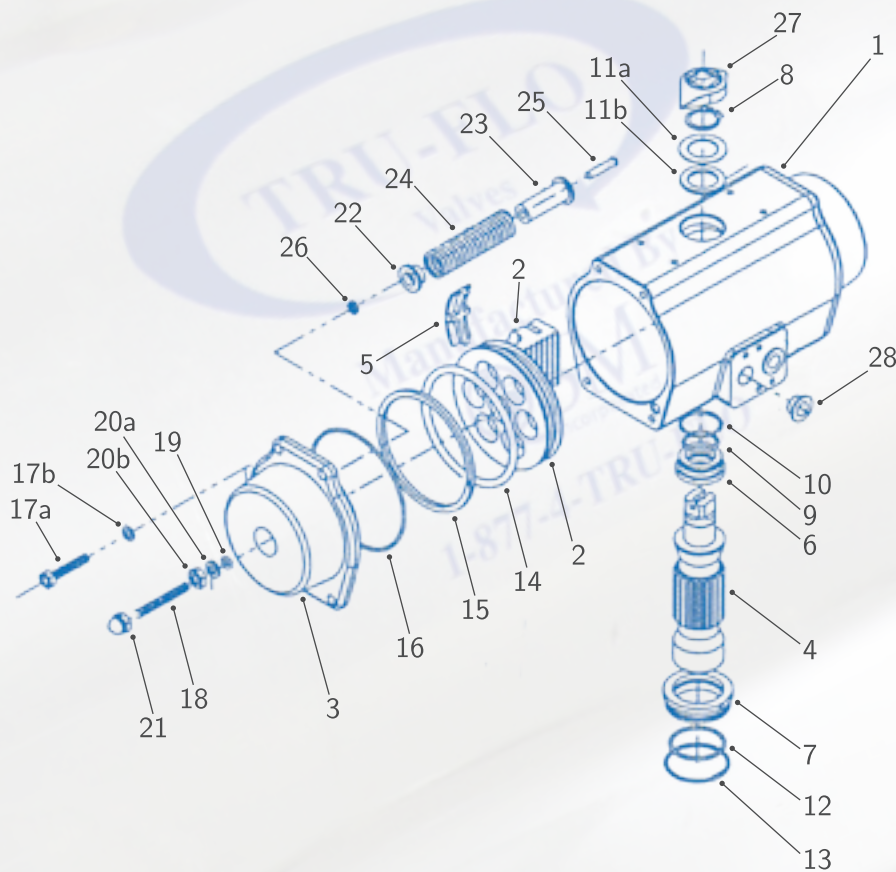
Seal Kits

BUNA-N Seal Kit #	Model #SKB
VITON® Seal Kit #	Model #SKY
Silicon Seal Kit #	Model #SKS

Includes all sealing parts, snap ring, and washer.



ALPHA SERIES



Part	Description	Qty	Material
1	Body	1	Stainless Steel
2	Piston	2	Stainless Steel
3	End Caps (Dbl Acting)	2	Stainless Steel
4	Drive Pinion	1	Stainless Steel
5	Guide Bearing Plate	2	Nylon 6
6	Pinion Bearing Top	1	Teflon
7	Pinion Bearing Bottom	1	Teflon
8	Snap Ring	1	Stainless Steel
9	O-ring (Inner Top)	1	VITON®
10	O-ring (Outer Top)	1	VITON®
11a	Washer	1	Stainless Steel
11b	Bearing	1	Nylon 6
12	O-ring (Inner Bottom)	1	VITON®
13	O-ring (Outer Bottom)	1	VITON®
14	O-ring (Piston)	2	VITON®
15	Bearing (Piston)	2	Nylon 6
16	O-ring (End Cap)	2	VITON®
17a	Bolts (End Cap)	8	Stainless Steel
17b	Spring Bearing	8	Stainless Steel
18	Adj. Travel Stop	2	Stainless Steel
19	O-ring (Travel Stop)	2	VITON®
20a	Washer	2	Stainless Steel
20b	Nut (Travel Stop)	2	Stainless Steel
21	End Nut (Travel Stop)	2	Stainless Steel
22	Spring Retainer (S)	*	Nylon 6
23	Spring Retainer (L)	*	Nylon 6
24	Spring	*	Plated Carbon Steel
25	Spring Screw	*	Stainless Steel
26	Spring Nut	*	Stainless Steel
27	Position Indicator	1	Nylon
28	Plug	2	Nylon 6

