



127 Village Lane  
 Easley, SC 29642  
 Ph: (864) 605-0150  
 Fax: (864) 605-0830  
 www.tru-flo.com

**XA Series  
 LIMIT SWITCH**  
 Installation & Operation Manual  
 Page 1 of 1

**INSTALLATION**

1. Attach proper mounting bracket (1) to the switch box housing (4) using four M6x8 socket head cap screws (2) provided.
2. Align switch box shaft to top of actuator shaft and engage it.
3. Attach bracket to actuator using hardware (3) provided (finger tight only).
4. By actuating package the switch and actuator will self-align.
5. Tighten bracket to top of actuator.

**SWITCH ADJUSTMENT (Figure 1)**

1. Disconnect power prior to opening lid.
2. Loosen switch box cover screws (8) and remove cover (7).
3. Rotate actuator to full clockwise position.
4. Push down top cam (5a) and turn until switch is activated and then release. Engage cam on to the splined retainer. Spring will maintain cam engagement.
5. Rotate actuator to full counter-clockwise position.
6. Pull up bottom cam (5b) and turn until switch is activated and then release. Engage cam on to the splined retainer. Spring will maintain cam engagement.
7. Place cover (7) on switch box and tighten. Take care to ensure that cover gasket seal is properly located in seal groove. Tighten screws in a cross pattern.

**ELECTRICAL WIRING (Figure 2 & 3)**

1. Remove switch box cover (see switch adjustment section 1).
2. Remove protection plug(s) from conduit entries and install conduit or plugs suitable for type of protection required.  
**WARNING:** To maintain the NEMA 4 X, 7 & 9 ratings, the use of proper wiring methods per NEC and local codes is required. Conduit plugs supplied with the switch box are for transit purposes only. To ensure proper protection any unused conduit entry must be closed with appropriate conduit plug.
3. Engage wires in terminal strip (14) using a small screwdriver (! " blade).

**3D INDICATOR SETTING**

1. Rotate actuator to closed.
2. Remove four screws (13) and remove 3D indicator cover (12).
3. Remove screw (10) and lift up 3D indicator from splined retainer.
4. Set 3D indicator (9) on splined retainer according to valve position.
5. Attach 3D indicator with (10) screw.
6. Replace 3D indicator cover (12) and fasten with cover screws (13). Check to ensure that seal (11) is properly located in seal groove.

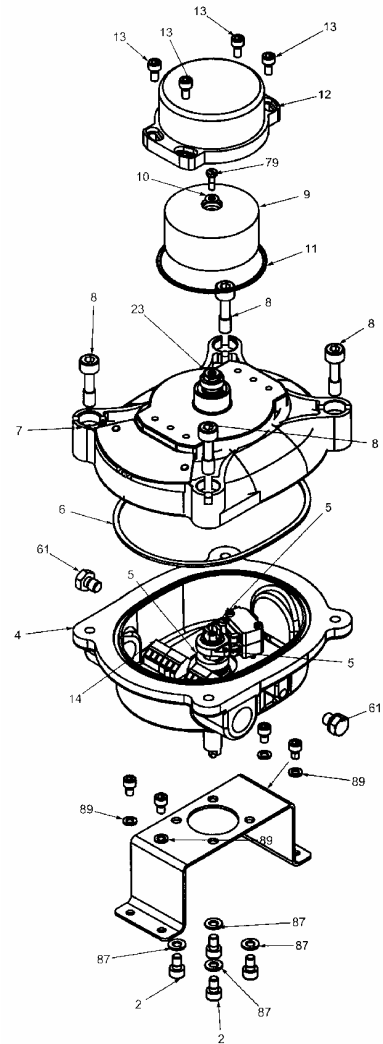


FIGURE 1

**2 SWITCHES SPDT**

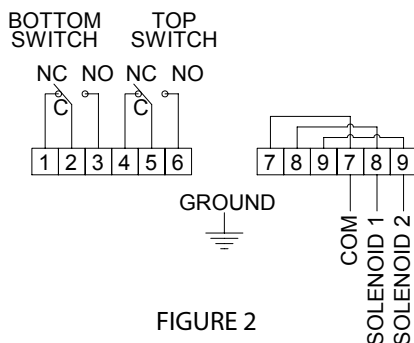


FIGURE 2

**2 SWITCHES SPST**

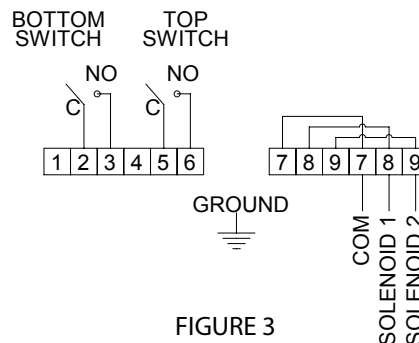


FIGURE 3