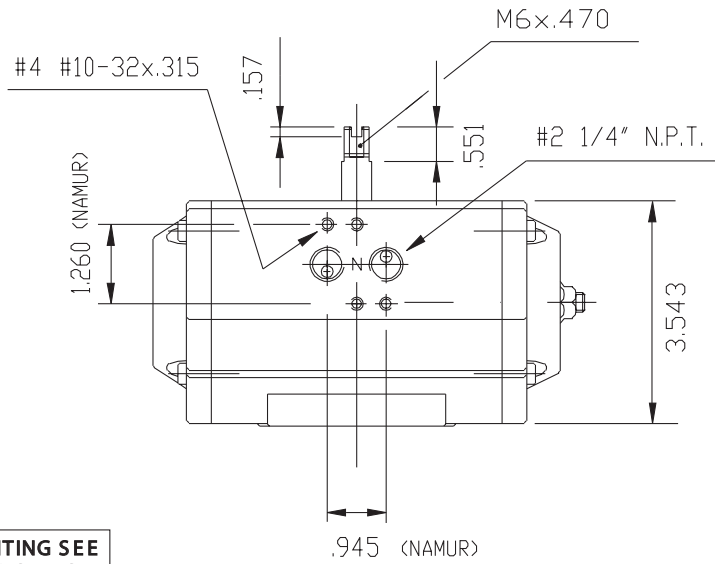
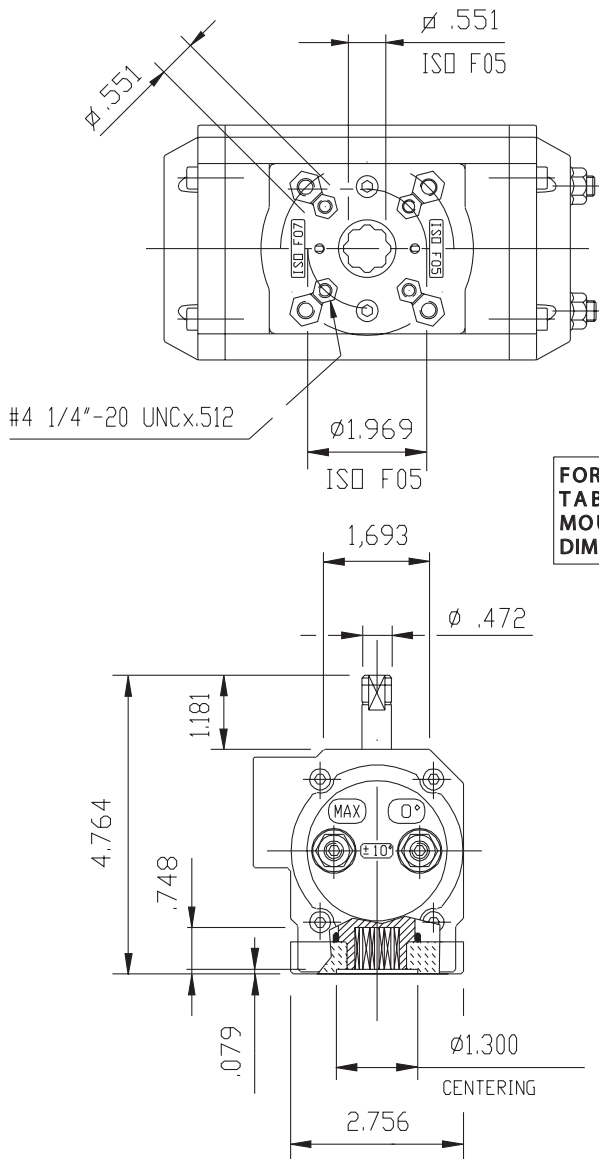


**UT-17**  
TECHNICAL DATA

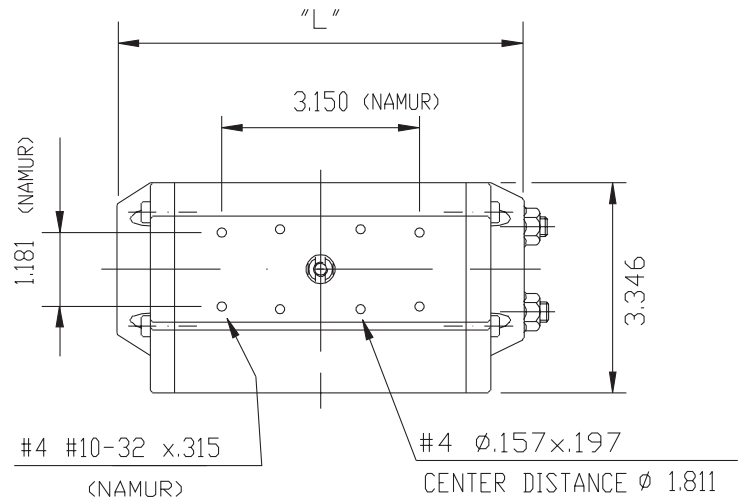


DIMENSIONS TO  
ISO 5211 - DIN 3337  
AND NAMUR VDI/DE 3845

DIMENSIONS IN INCHES



**FOR MOUNTING SEE  
TABLE "BOTTOM  
MOUNTING PLATE  
DIMENSIONS"**



	90°	120°	135°	150°	180°
"L"	7.756	8.622	9.252	9.881	10.787

**WEIGHT**

STROKE	DOUBLE ACTING					SPRING RETURN 7+5 SPRING
	90°	120°	135°	150°	180°	90°
LB.	5.18	5.73	6.28	6.94	8.05	5.71

**AIR CONSUMPTION (FULL CYCLE)**

STROKE	DOUBLE ACTING					SPRING RETURN 7+5 SPRING
	90°	120°	135°	150°	180°	90°
CU.-IN.	34.3	39.9	43.1	47.4	53.7	15.6