



127 Village Lane
 Easley, SC 29642
 Ph: (864) 605-0150
 Fax: (864) 605-0830
 www.tru-flo.com

**CA & CS Series
 LIMIT SWITCH
 Installation & Operation Manual
 Page 1 of 1**

INSTALLATION

1. Attach proper mounting bracket (21) to the switch box housing (1) using four M6x8 socket head cap screws (20) provided.
2. Align switch box shaft (4) to top of actuator shaft and engage it.
3. Attach bracket to actuator using hardware provided (finger tight only).
4. By actuating package the switch and actuator will self align.
5. Tighten bracket to top of actuator.

SWITCH ADJUSTMENT (Figure 1)

1. Loosen switch box cover screws (18) and remove cover (2).
2. Remove indicator screw (19) and remove indicator (17).
WARNING: Hold indicator (17) tightly when loosening and tightening screw (19). Do not rotate indicator (17) when engaged on retainer (12c), this will damage the splines.
3. Rotate actuator clockwise.
4. Push down top cam (11b) and turn until switch is activated and then release. Engage cam (11b) back onto the splined retainer (12b). Spring (13) will maintain cam engagement.
5. Rotate actuator counter-clockwise.
6. Lift up bottom cam (11a) and turn until switch is activated and then release. Engage cam (11a) back onto the splined retainer (12a). Spring (13) will maintain cam engagement.
7. Set indicator (17) to match valve position
8. Hand grip indicator (17) and tighten screw (19).
9. Place cover (2) on switch box and tighten. Take care to ensure that cover gasket seal is properly located in seal groove

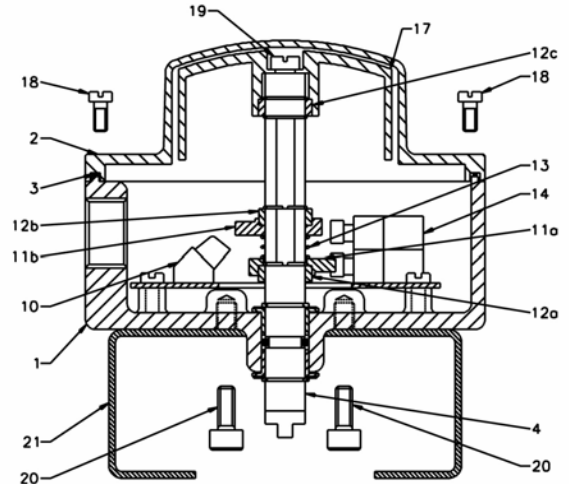


FIGURE 1

ELECTRICAL WIRING (Figures 2 & 3)

1. Remove switch box cover (2) and indicator (17). (see switch adjustment sections 1 and 2).
2. Remove protection plugs from conduit entries and install conduit or plugs suitable for type of protection required.
WARNING: To maintain the NEMA 4 rating, the use of proper wiring methods per NEC and local codes is required.
3. Engage wires in terminal strip (10) using a small screwdriver (1/8" blade).

2 SWITCHES SPDT

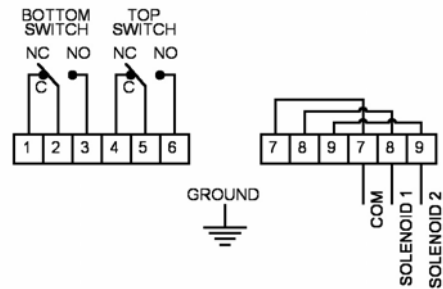


FIGURE 2

2 SWITCHES SPST

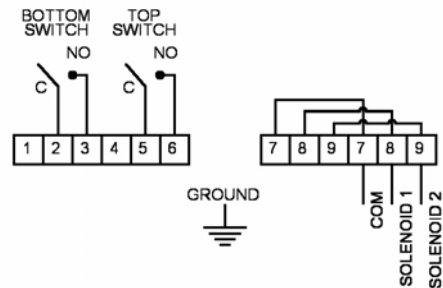


FIGURE 3

Note: Conduit plugs supplied with the switch box are for transit purposes only. To ensure NEMA 4 protection any unused conduit entry must be closed with appropriate conduit plug.