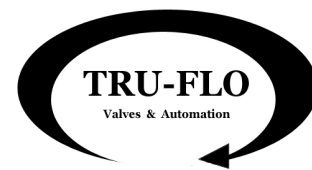




"NAMUR" SOLENOID VALVE NEMA 4 and NEMA 7



(NEMA 4 Pictured)

Features and Benefits

The Max-Air NAMUR series solenoid valve is a revolution in design.

Featuring an electroless nickel plated spool, easy-to-use manual override, a uniquely design air pressure *pop up indicator, and the fact that each solenoid valve is field convertible for use on either double acting (4 way) or spring return (3 way) actuators, you will be way ahead of your competition.

Each solenoid valve is available in single coil (SV61), dual coils (SV62) or 3 positions configuration (SV3P) and can be used on either lubricated or non-lubricated air.

* The Max-Air exclusive "pop-up" air indicator is a benefit-rich feature which provides for a quick check to verify if the solenoid valve is pressurized or not.

Technical Data

Port connections

Inlet and exhaust	1/4" NPT
Outlet	NAMUR interface
DIN connector	1/2" NPT

Pressure Range: 30 to 150 PSI

Flow factor: 10.5 Cv

Media Temperature: -4°F +158°F

Response Time: On: 13 ms;
Off: 38 ms (@ 90 PSI)

Operating Voltages 12 V DC, 24 V DC
24 V AC, 48 V AC
110 V AC, 220 V AC

Voltage Tolerance: ± 10%

Power Consumption: DC: 6 W
AC: 7.5 VA inrush,
holding 6 VA

Coil Insulation Class: Class F standard
Class H optional
NEMA 7 available

Duty cycle: 100% ED

Max operating frequency: 600/1'

Protection Class: NEMA 4 (pictured)
NEMA 7

Material

Body: Epoxy coated
die cast aluminum

Spool: ENP aluminum

Piston: Aluminum

Spring: Stainless Steel

Seal: Buna-N

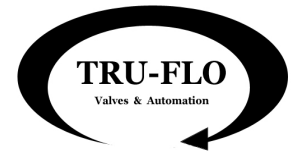
Screws: Stainless Steel

Other components: Technopolymer





"NAMUR" SOLENOID VALVE



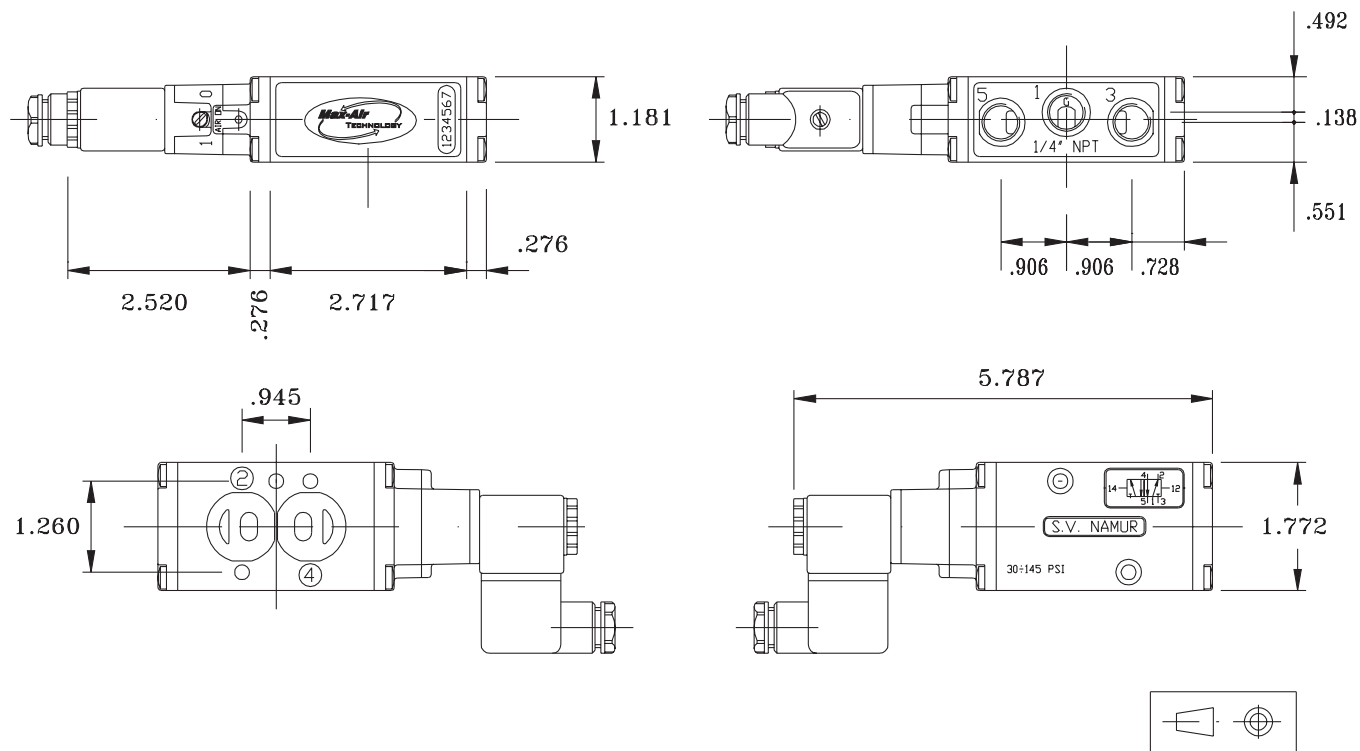
SYMBOL	DESCRIPTION	CODE
		1/4" NPT
	SOLENOID VALVE MONOSTABLE 3/2-5/2 LEFT PILOT NEMA 4	SV61-*****
	SOLENOID VALVE MONOSTABLE 3/2-5/2 LEFT PILOT EExi	SV71-*****
	SOLENOID VALVE MONOSTABLE 3/2-5/2 LEFT PILOT EExm	SV81-*****
	SOLENOID VALVE MONOSTABLE 3/2-5/2 LEFT PILOT NEMA 7	SV91-*****
	PNEUMATIC VALVE MONOSTABLE 3/2-5/2 PNEUMATIC LEFT PILOT	NP61-*****
	SOLENOID VALVE MONOSTABLE 3/2-5/2 LEFT PILOT NEMA 7	SV91-*****
	PNEUMATIC VALVE MONOSTABLE 3/2-5/2 PNEUMATIC LEFT PILOT	NP61-*****
	SOLENOID VALVE DUAL STABLE 3/2-5/2 PILOTS NEMA 4	SV61-*****
	SOLENOID VALVE DUAL STABLE 3/2-5/2 PILOTS EExi	SV71-*****
	SOLENOID VALVE DUAL STABLE 3/2-5/2 PILOTS EExm	SV81-*****
	SOLENOID VALVE DUAL STABLE 3/2-5/2 PILOTS NEMA 7	SV91-*****
	PNEUMATIC VALVE DUAL STABLE 3/2-5/2 PNEUMATIC PILOTS	NP62-*****
	SOLENOID VALVE DUAL STABLE 3/2-5/2 PILOTS NEMA 7	SV91-*****
	PNEUMATIC VALVE DUAL STABLE 3/2-5/2 PNEUMATIC PILOTS	NP62-*****
	SOLENOID VALVE MONOSTABLE 3/2-5/2 RIGHT PILOT NEMA 4	SV63-*****
	SOLENOID VALVE MONOSTABLE 3/2-5/2 RIGHT PILOT EExi	SV73-*****
	SOLENOID VALVE MONOSTABLE 3/2-5/2 RIGHT PILOT EExm	SV83-*****
	SOLENOID VALVE MONOSTABLE 3/2-5/2 RIGHT PILOT NEMA 7	SV93-*****
	PNEUMATIC VALVE MONOSTABLE 3/2-5/2 PNEUMATIC RIGHT PILOT	NP63-*****
	SOLENOID VALVE 3/3-5/3 CLOSED CENTERS PILOTS NEMA 4	S36C-*****
	SOLENOID VALVE 3/3-5/3 CLOSED CENTERS PILOTS EExi	S37C-*****
	SOLENOID VALVE 3/3-5/3 CLOSED CENTERS PILOTS EExm	S38C-*****
	SOLENOID VALVE 3/3-5/3 CLOSED CENTERS PILOTS NEMA 7	S39C-*****
	PNEUMATIC VALVE 3/3-5/3 CLOSED CENTERS PNEUMATIC PILOTS	NP3C-*****
	SOLENOID VALVE 3/3-5/3 CLOSED CENTERS PILOTS NEMA 7	S39C-*****
	PNEUMATIC VALVE 3/3-5/3 CLOSED CENTERS PNEUMATIC PILOTS	NP3C-*****
	SOLENOID VALVE 5/3 OPENED CENTERS PILOTS NEMA 4	S36A-*****
	SOLENOID VALVE 5/3 OPENED CENTERS PILOTS EExi	S37A-*****
	SOLENOID VALVE 5/3 OPENED CENTERS PILOTS EExm	S38A-*****
	SOLENOID VALVE 5/3 OPENED CENTERS PILOTS NEMA 7	S39A-*****
	PNEUMATIC VALVE 5/3 OPENED CENTERS PNEUMATIC PILOTS	NP3A-*****
	SOLENOID VALVE 5/3 OPENED CENTERS PILOTS NEMA 7	S39A-*****
	PNEUMATIC VALVE 5/3 OPENED CENTERS PNEUMATIC PILOTS	NP3A-*****
	SOLENOID VALVE 5/3 CENTERS IN PRESSURE PILOTS NEMA 4	S36P-*****
	SOLENOID VALVE 5/3 CENTERS IN PRESSURE PILOTS EExi	S37P-*****
	SOLENOID VALVE 5/3 CENTERS IN PRESSURE PILOTS EExm	S38P-*****
	SOLENOID VALVE 5/3 CENTERS IN PRESSURE PILOTS NEMA 7	S39P-*****
	PNEUMATIC VALVE 5/3 CENTERS IN PRESSURE PNEUMATIC PILOTS	NP3P-*****

QSM, Inc. Manufacturer of Tru-Flo Valves & Automation

127 Village Lane Easley, SC 29642 Tel: (864) 605-0150 Fax: (864) 605-0830 www.tru-flo.com

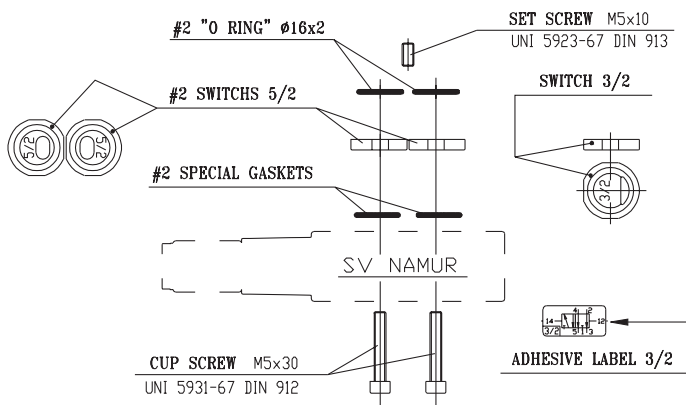


"NAMUR" SOLENOID VALVE



DIMENSIONS IN INCHES

STANDARD KIT



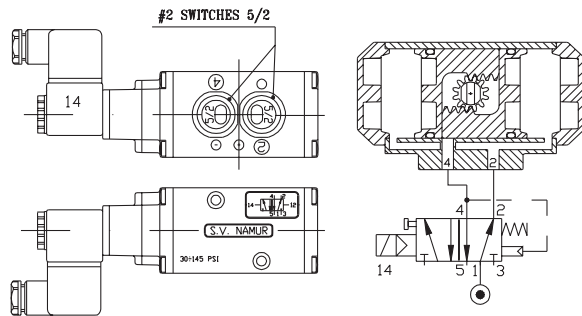
TECHNICAL DATA

Standard voltages = 24 - 110 - 220V 50/60 Hz - 12 - 24V DC
 Power input = 50/60 Hz inrush 7,5VA rated 5VA
 Power input = DC 3W
 Voltage tolerance = $\pm 10\%$
 Coil insulation = class "F" (for nylon coil)
 Duty cycle = 100%
 Protection class = NEMA 4, 4x with connector assembled
 Air supply connection = 1/4" NPT
 Operating pressure = min. 30 PSI - max. 145 PSI
 Din connector 1/2" NPT
 Flow factor = Cv 0.5
 Max operating frequency = 600/1'
 Room temperature limit = -4°F +158°F
 Weight = 1.080 Lb

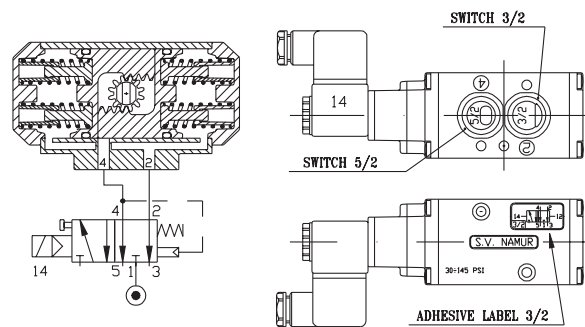
QSM, Inc. Manufacturer of Tru-Flo Valves & Automation

127 Village Lane Easley, SC 29642 Tel: (864) 605-0150 Fax: (864) 605-0830 www.tru-flo.com

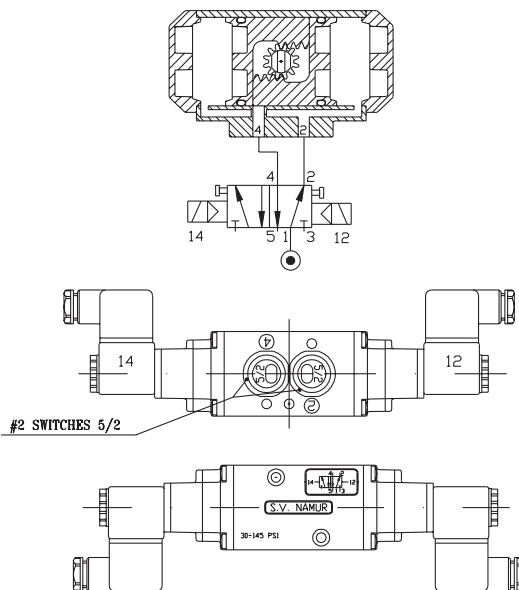
SV61 - 5/2 MONOSTABLE LEFT PILOT



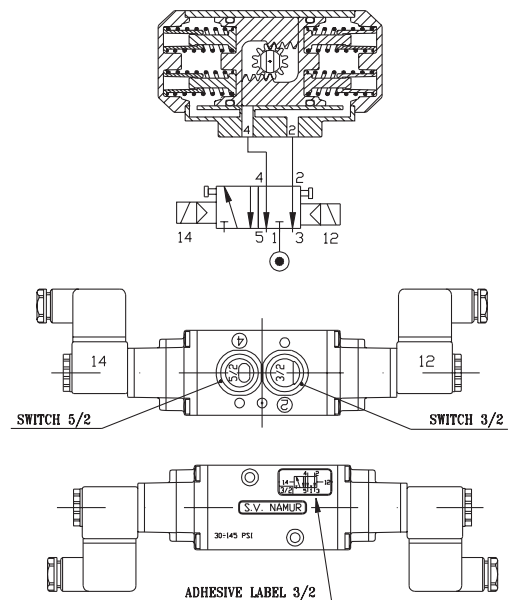
SV61 - 3/2 MONOSTABLE LEFT PILOT



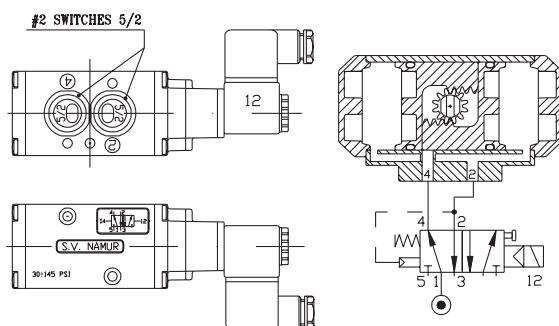
SV62 - 5/2 DUAL STABLE



SV62 3/2 DUAL STABLE



SV63 - 5/2 - MONOSTABLE RIGHT PILOT



SV63 - 3/2 - MONOSTABLE RIGHT PILOT

