

INDUSTRIAL BALL VALVES

1-PC SERIES



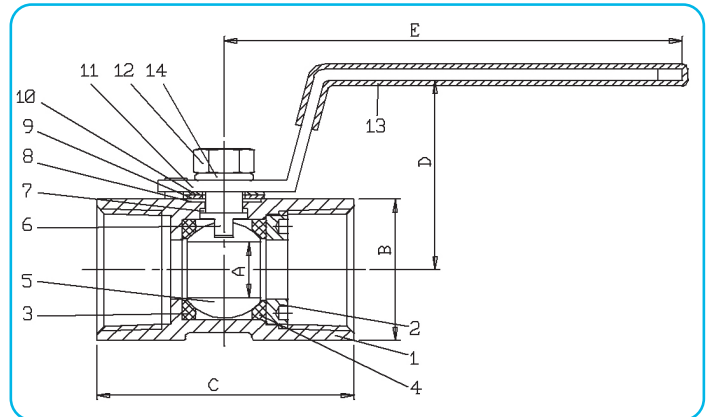
EA - 102A - SE



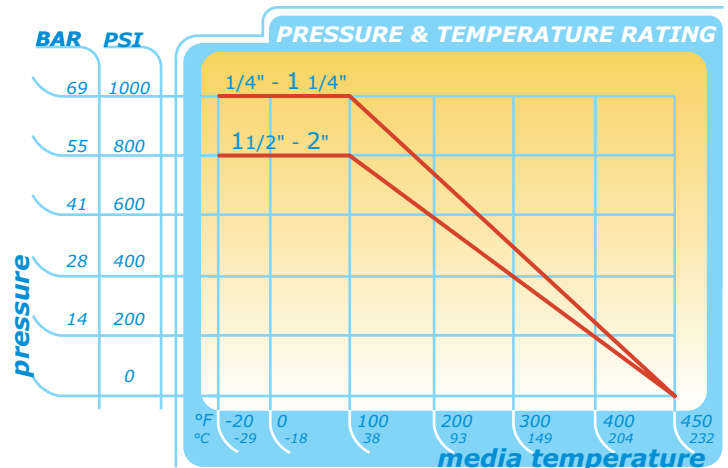
FEATURES / SPECIFICATIONS:

- General Purpose Industrial Application
- 1 Piece 316 Stainless Steel investment cast unibody
- Locking handle
- 800-1000 WOG working pressure
- Reduced port design
- For use up to 450 °F
- ANSI B16.34, ASTM-A351
- Sizes: 1/4"-2"

Size		A		B		C		D		E	
mm	inch	mm	inch	mm	inch	mm	inch	mm	inch	mm	inch
8	1/4	5	0.196	17.1	0.673	38.7	1.524	27.2	1.071	58	2.283
10	3/8	7	0.276	20.7	0.815	44.2	1.74	29	1.142	70	2.756
15	1/2	9	0.354	24.8	0.976	55.6	2.189	36.5	1.437	85	3.346
20	3/4	12.5	0.492	31.4	1.236	62.1	1.445	39.8	1.567	85	3.346
25	1	15	0.59	38.2	1.504	68.9	2.713	49.1	1.933	100	3.937
32	1 1/4	20	0.787	47	1.85	78.2	3.079	53.5	2.106	100	3.937
40	1 1/2	24.5	0.965	53	2.087	86	3.386	61.5	2.421	125	4.921
50	2	32	1.26	65.2	2.567	102.7	4.043	67.6	2.661	125	4.921



Item	Parts Name	Material	Qty
1	BODY	ASTM A351.CF8M/SS316	1
2	SEAT RETAINER	SS316	1
3	SEATS	PTFE + 15% G.F.	1
4	SPECIAL SEAT	PTFE + 15% G.F.	1
5	BALL	ASTM A351. CF8M/SS316	1
6	STEM	SS316	1
7	GASKET	PTFE + 15% G.F.	1
8	THIN GASKET	PTFE + 15% G.F.	1
9/10	FLAT WASHER	420J1	1
11	SPRING WASHER	420J1	1
12	HANDLE	SS304	1
13	PREVENT LOOSE NUT	SS304	1
14	HANDLE COVER	VINYL	1
	LEVEL SPRING WASHER	SS304	1



EA - 102A - SE